



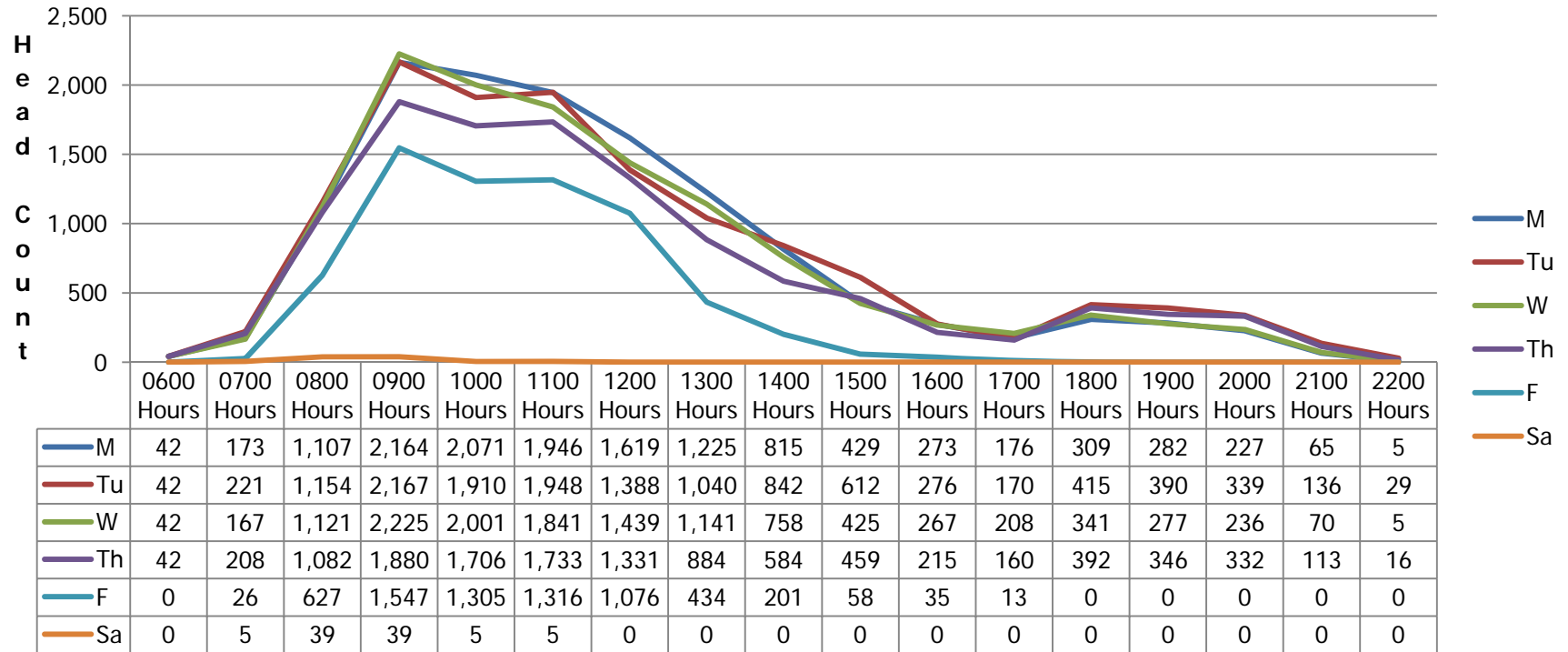
## SCC Campus Occupancy by Day and Time of Day

This study provides an estimate of the number of persons physically present on the Spokane Community College Campus by day and time of day for the Fall, 2011 quarter. It does so for the first few days of the Fall quarter when the number of persons on campus is likely to be at the maximum and for a mid-quarter time period, when on-campus occupancy is likely to be more representative of typical campus occupancy.

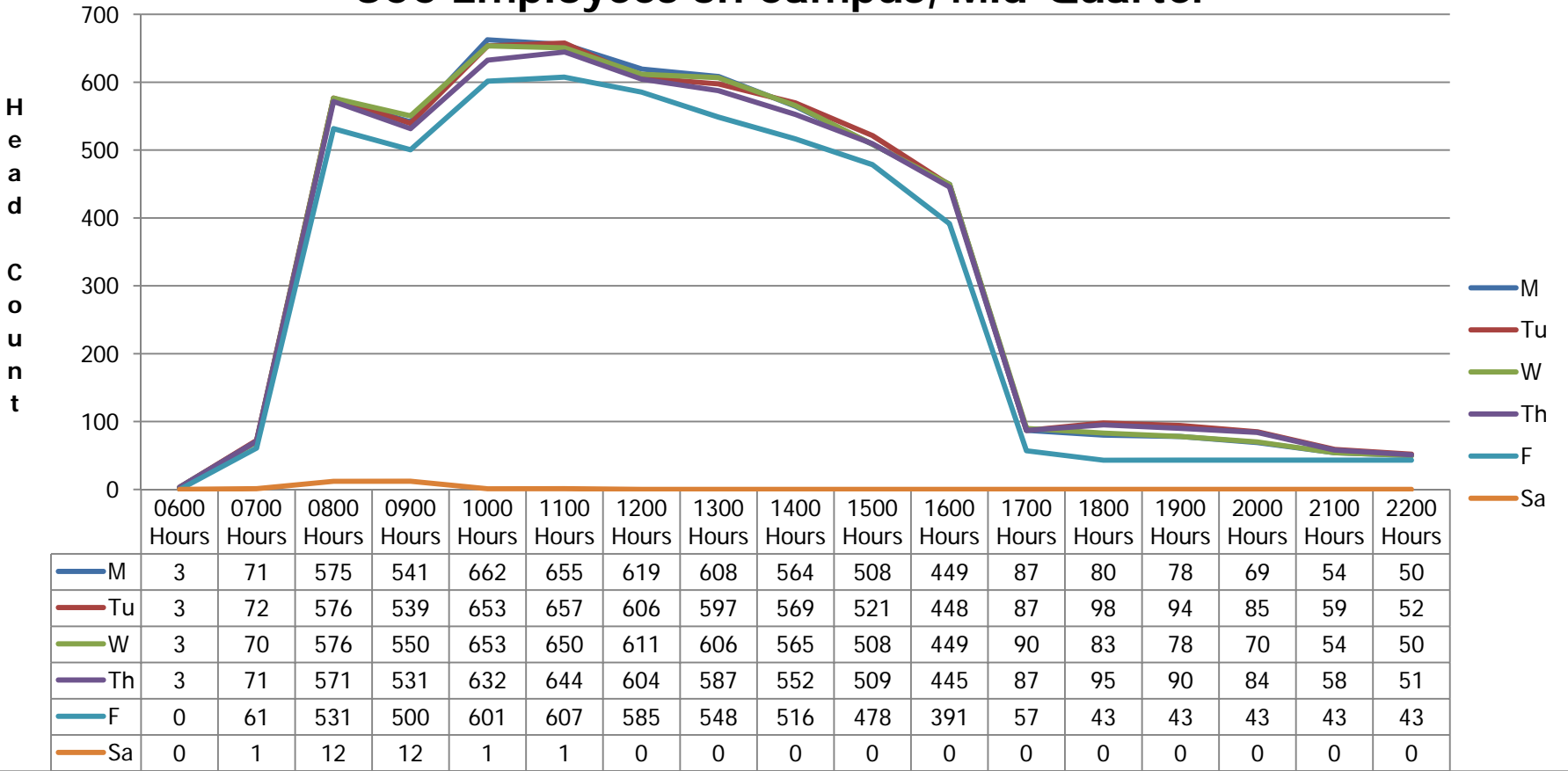
There are a total of five charts. The first chart is the count of students on campus during a typical day. The chart is generated from SCC class enrollment data for the Fall 2011 quarter. In a typical day actual class attendance is about 75% of the class enrollment. The headcount on campus figures presented reflect this assumption.

Attendance by SCC employees is assumed to be unwavering and constant, the same for any given day in the quarter. Part time hourly employees are assumed to be on campus in a distribution that results in 40% of them being physically present at any given moment between 0800 and 1600 Monday through Friday and 10% are physically present at any moment between 1700 and 2200 Mondays through Fridays. All faculty are included on campus during the hours of instruction of their classes only. This will bias their on campus time downwards since it assumes no faculty stay on campus for committee meetings, advising sessions etc.

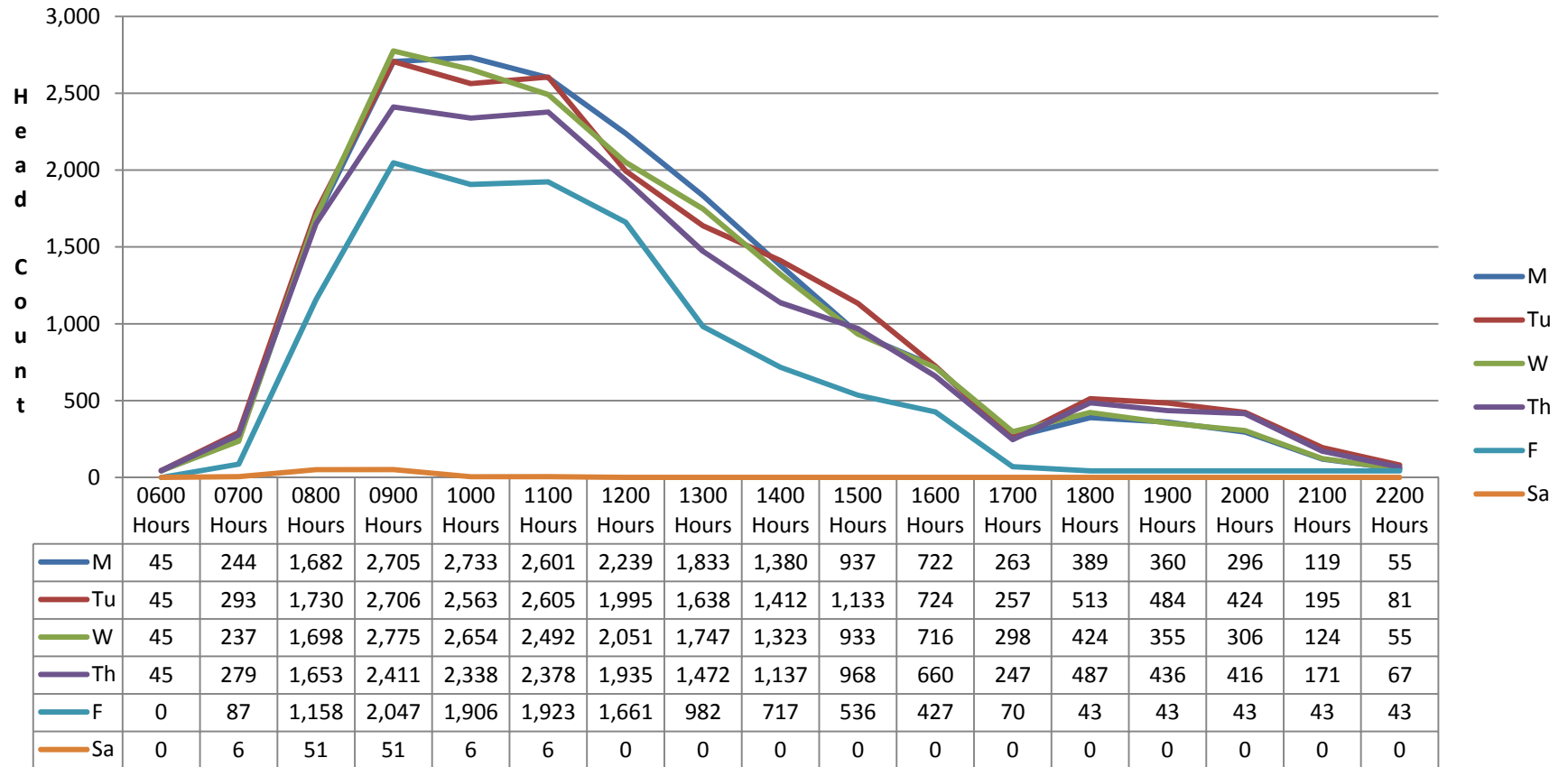
## SCC Students on Campus, Mid-Quarter 75% attendance



# SCC Employees on Campus, Mid-Quarter



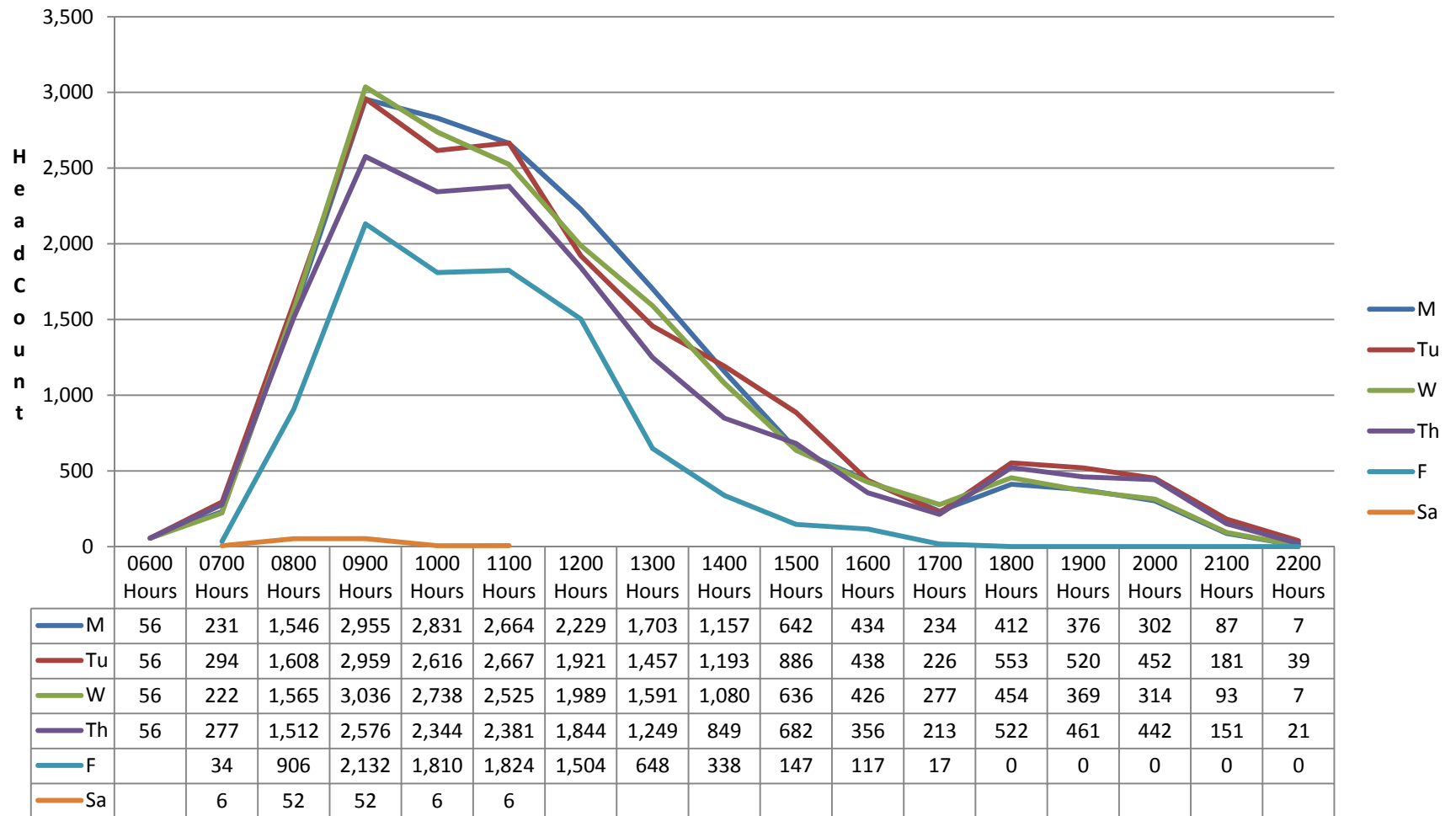
## SCC Mid Quarter Total on Campus by Day and Time, 75% student Attendance



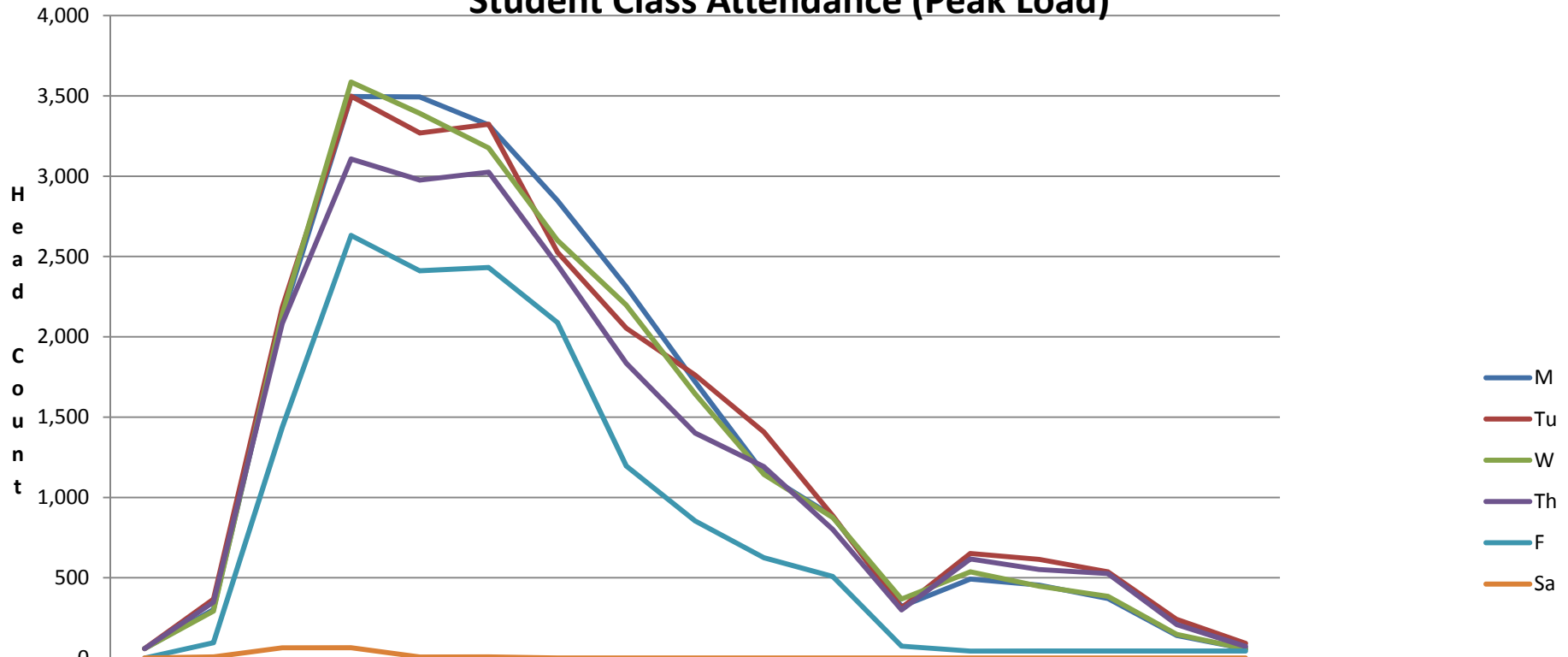
For purposes of comparison, the headcount on campus at SCC by day and time of day is presented below for the peak period of campus occupancy, the first week of the quarter. The faculty and employee headcount on campus is assumed to be constant throughout the quarter so the chart for employee headcount on campus during mid-quarter is the same for employee headcount on campus in the first week. The term Employees includes all who are not students. This includes CCS district instructional technology personnel who work at the SCC campus, employees and children at the day care center and all classified, professional exempt and administrative personnel. All testing and non-instructional class sections are assumed to take place during the first week of the term only, involving one hour only of on campus time and all such events are evenly distributed over M-F from 0800 to 1600 hours of the first week. All practicums, internships, co-op or on-the-job training, independent study or anything resembling a supervision section are deemed to be off-campus in non state-supported space. Part time hourly employees are assumed to be on campus in a distribution that results in 40% of them being physically present at any given moment between 0800 and 1600 hours Monday through Friday and 10% of them being physically present at any given moment between 1700 and 2200 hours Monday through Friday. For the purpose of estimating peak campus attendance, student attendance in class the first week of the quarter is assumed to be 100% of enrollment.

There are 3,330 parking spaces available on the SCC campus to serve students, employees and visitors.

## SCC Student Headcount, First week of Quarter, 100% Attendance (Peak Load)



## SCC Campus Headcount by Day and Time, First Week of Term, 100% Student Class Attendance (Peak Load)



	0600 Hours	0700 Hours	0800 Hours	0900 Hours	1000 Hours	1100 Hours	1200 Hours	1300 Hours	1400 Hours	1500 Hours	1600 Hours	1700 Hours	1800 Hours	1900 Hours	2000 Hours	2100 Hours	2200 Hours
M	59	302	2,121	3,496	3,493	3,319	2,848	2,311	1,721	1,150	883	321	492	454	371	141	57
Tu	59	366	2,184	3,498	3,269	3,324	2,527	2,054	1,762	1,407	886	313	651	614	537	240	91
W	59	292	2,141	3,586	3,391	3,175	2,600	2,197	1,645	1,144	875	367	537	447	384	147	57
Th	59	348	2,083	3,107	2,976	3,025	2,448	1,836	1,401	1,191	801	300	617	551	526	209	72
F	0	95	1,437	2,632	2,411	2,431	2,089	1,196	854	625	508	74	43	43	43	43	43
Sa	0	7	64	64	7	7	0	0	0	0	0	0	0	0	0	0	0